

CURRENT SLATE



DAVID A. ANDERSON

David A. Anderson (Nominated Elected Officer) is an associate professor of archaeology at the University of Wisconsin-La Crosse. He received his Ph.D. in anthropology from the University of Pittsburgh in 2006. Since 1996 he has been the director of the El-Mahâsna Archaeological Project. His research focuses on the origins of Egyptian civilization, in particular the organization of Predynastic society and the role of ideology in the formation of the ancient Egyptian centralized state and the origins of Egyptian divine kingship. Dr. Anderson specializes in the integration of computers and archaeology, utilizing 3D technologies to facilitate collection, analysis, and dissemination of field results.



NICOLA ARAVECCHIA

Nicola Aravecchia (Nominated Elected Governor) holds a BA in Classical Studies from the University of Bologna, an MA in Ancient and Medieval Art & Archaeology and a Ph.D. in Art History both from the University of Minnesota. He is the Archaeological Field Director of the excavations at 'Ain el-Gedida, a fourth-century settlement in the Dakhla Oasis of Upper Egypt, and the Deputy Field Director at Amheida/Trimithis, a Graeco-Roman city in Dakhla Oasis. Nicola is also a Research Affiliate of the Institute for the Study of the Ancient World at New York University. In the Spring of 2016, he was the invited Chair of Coptic Studies at The American University in Cairo. Nicola's research interests encompass the art and archaeology of Graeco-Roman and late antique Egypt. In particular, they focus on the origins and development of Early Christian architecture in the Western Desert of Upper Egypt. Nicola is the co-author of a volume on the Amheida excavations, as well as the main author of the final archaeological report on 'Ain el-Gedida. He has also written articles and essays on related subjects, including Early Egyptian monasticism. At Washington University in St. Louis, Nicola teaches courses on ancient art and archaeology, with a focus on Egypt, and in Classical languages.



DENISE DOXEY

Denise Doxey (Nominated Elected Officer) is curator of Ancient Egyptian, Nubian and Near Eastern art at the Museum of Fine Arts, Boston. Previously, she was keeper of the Egyptian section of the University of Pennsylvania Museum of Archaeology and Anthropology. She completed her M.Phil at Oxford University and her Ph.D. at the University of Pennsylvania. She is the author or co-author of numerous publications on Egyptian and Nubian art, archaeology and civilization. She has excavated in Greece and Egypt and has taught Egyptology courses at the University of Pennsylvania and Harvard University. She currently serves on the board of ICOM's International Committee for Egyptology and is president of the New England chapter of ARCE.



SALIMA IKRAM

Salima Ikram (Nominated Elected Governor) is Distinguished University Professor of Egyptology at The American University in Cairo, and has worked as an archaeologist in Egypt, Turkey, Sudan, Greece and the United States. After double majoring in history and classical and near eastern archaeology at Bryn Mawr College, United States, she received her MPhil in museology and Egyptian archaeology and Ph.D. in Egyptian archaeology from Cambridge University. She has directed the Animal Mummy Project, the North Kharga Darb Ain Amur Survey, Valley of the Kings KV10/KV63 Mission co-directed the Predynastic Gallery project and the North Kharga Oasis Survey. She has also participated in several other archaeological missions throughout Egypt. She lectures internationally, and publishes in both scholarly and popular journals, as well as having an active media presence.



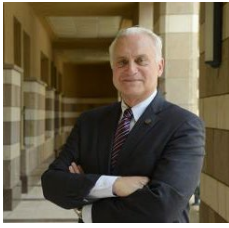
RITA LUCARELLI

Rita Lucarelli (Nominated Elected Governor) is currently an Associate Professor of Egyptology in the Department of Near Eastern Studies at the University of California, Berkeley. She studied at the University of Naples “L’Orientale,” Italy, where she received her MA degree in Classical Languages and Egyptology. She holds her Ph.D. from Leiden University, the Netherlands (2005). Her Ph.D. thesis was published in 2006 as *The Book of the Dead of Gatseshen: Ancient Egyptian Funerary Religion in the 10th Century BC*. From 2005 to 2010, Lucarelli held a part-time position as a Lecturer of Egyptology at the University of Verona, Italy. From 2009 to 2012, she worked as a Research Scholar on the Book of the Dead Project at the University of Bonn, Germany. She was a Visiting Research Scholar at the Italian Academy of Advanced Studies of Columbia University (2009) and at the Institute for the Study of the Ancient World (ISAW) of NYU (2012). Until June 2014 she worked as a Research Scholar and a Lecturer (Wissenschaftliche Mitarbeiterin) at the Department of Egyptology of Bonn University, and she held a part-time position as a Lecturer of Egyptology at the University of Bari in Italy. Rita Lucarelli is a Faculty Curator of Egyptology at the Phoebe A. Hearst Museum of Anthropology of the University of California, Berkeley and Fellow of the Digital Humanities in Berkeley. She is presently working at a project aiming at realizing 3D models of ancient Egyptian coffins of the Hearst Museum; the magical spells decorating these objects are taken as case-study for investigating the materiality of the text in relation to ancient Egyptian funerary literature. Rita Lucarelli is completing a monograph on demonology in ancient Egypt and she is one of the coordinators of the Ancient Egyptian Demonology Project: <http://www.demonthings.com>.



NICHOLAS PICARDO

Nicholas Picardo (nominated Chapter Council representative) is associate director of the Giza Project at Harvard University. He specializes in household archaeology and digital archaeology. He has served as director of the South Abydos Settlement Excavation E Project and field director with the Kom el-Hisn Provincialism Project. He was a visiting instructor of Egyptology at Brown University in 2010, and a research associate in the Art of the Ancient World department of the Museum of Fine Arts, Boston where he co-curated the exhibition “The Secrets of Tomb 10A: Egypt 2000 BC.” He co-founded the Pennsylvania chapter of ARCE, is currently the treasurer of the New England chapter, and previously served as each chapter’s president. He has been an ARCE member since 1998.



FRANCIS JOSEPH RICCIARDONE JR.

Francis Joseph Ricciardone Jr. (Presidential Appointee) became the twelfth President of the American University in Cairo on July 1, 2016. Previously he had served as a United States Foreign Service officer, including assignments as Ambassador to Turkey (2011-2014), Egypt (2005-2008), The Philippines and the Republic of Palau (2002-2005), and as Chargé d'affaires and Deputy Ambassador at the U.S. Embassy in Kabul, Afghanistan. Outside U.S. Government Service, he was Vice President of the Atlantic Council and Director of its Rafik Hariri Center for the Middle East (2014-2016); a distinguished visiting scholar at U.S. Institute of Peace (2008-2009); Chief of the Civilian Observer Unit of the Multinational Force and Observers in the Sinai (1991-1993), an international peacekeeping organization. Ricciardone has extensive executive experience in public policy in world affairs, interdisciplinary and inter-agency program direction, international educational exchange, organizational change and development, and cross-cultural public communications. Ricciardone speaks and reads Arabic, Italian, Turkish, and French, as well as rudimentary Farsi. He will step down as AUC's President in June 2021.



DEBORAH VISCHAK

Deborah Vischak (nominated RSM Council representative) is an assistant professor of ancient Egyptian art and archaeology in the department of art and archaeology at Princeton University. She received her Ph.D. from the New York University Institute of Fine Arts in 2006. Her work investigates social and communal identities and regionalism in Egyptian material culture. She has worked on excavations and conducted field work at a number of sites from Giza to Aswan, and has recently joined Dr. Matthew Adams as co-director of the Abydos North Cemetery project. Dr. Vischak was an ARCE fellow in 2003 and has been an ARCE member since.

CURRENT BOARD: OFFICERS

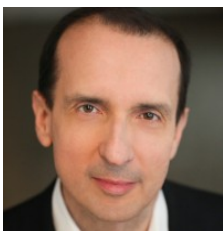


PRESIDENT: BETSY BRYAN

Betsy Bryan is the Alexander Badawy Professor of Egyptian Art and Archaeology at Johns Hopkins University. She received her Ph.D. from Yale University in 1980. Her areas of specialization are history, art and archaeology of the New Kingdom. Her current fieldwork is in the temple complex of the goddess Mut at South Karnak, and her research focuses on defining the earliest forms of the temple of Mut of Isheru.

VICE PRESIDENT: DAVID A. ANDERSON

See under Current Slate above



TREASURER: PAUL STANWICK

Paul Stanwick was a management consultant at Accenture PLC, with experience across a range of financial services, including banking, hedge funds, financial publishing and investment research. He has worked with the Taproot Foundation on non-profit consulting management. He earned an MBA in finance from Indiana University, and a Ph.D. in Egyptian and Roman art history and archaeology from the New York University Institute of Fine Arts. Dr. Stanwick is a scholar of Ptolemaic and Roman Egypt. He has been an ARCE member since 1988.

CURRENT BOARD: ELECTED GOVERNORS

NICOLA ARAVECCHIA

See under Current Slate above



STEPHANIE DENKOWICZ

Stephanie Denkowicz is a special counsel at Manatt, Phelps & Phillips, LLP specializing in corporate law and cross border mergers and acquisitions. She earned her B.A. in anthropology and government from the University of Arizona, her J.D. from Rutgers University and is currently completing her Masters in Egyptology from the University of Manchester. Ms. Denkowicz has served on numerous not-for-profit boards, including those that support orphaned and abandoned children, the arts and cultural affairs. She has been an ARCE member since 2003, is a member of the Nuri Archaeological Expedition, a board member and president of the ARCE New York chapter, and has previously served on a number of ARCE Board Committees.

DENISE DOXEY

See under Current Slate above.



WILLIAM INGLEE

William Inglee is a senior partner at Inglee Sauer Market Strategies, LLC. Previously, Mr. Inglee worked on Capitol Hill as a Congressional staff member for 25 years, and was directly involved in ARCE's initial USAID funding in the mid-1990s. He has also served as staff director for the House Appropriations Committee. Mr. Inglee has served on numerous boards, including those that support environmental preservation, culture and international affairs. He joined ARCE in 2009 and was a member of ARCE's Board of Governors from 2013 to 2016.

RITA LUCARELLI

See under Current Slate above



NADINE MOELLER

Nadine Moeller is Associate Professor of Egyptian Archaeology at the Oriental Institute, University of Chicago. She received her Ph.D. from the University of Cambridge in 2004, and held the Lady Wallis Budge Junior Research Fellowship at University College, Oxford, from 2004-2007. Her primary research interests are settlement archaeology and urbanism in ancient Egypt. Her recently published book is entitled "The Archaeology of Urbanism in Ancient Egypt –The settlements from the Predynastic Period to the end of the Middle Kingdom" (published in April 2016 with Cambridge University Press) which brings together the latest archaeological data and presents a new in-depth study setting the parameters for Egypt as an early urban society. She has been directing the Tell Edfu Project since 2001, and since 2010 She has been directing the Tell Edfu Project since 2001, and since 2010 she has been co-directing this project with Gregory Marouard, Senior Research Scholar and Lecturer at Yale. Apart from Tell Edfu, she has also participated in numerous other excavations and fieldwork projects in Egypt.



ADAM SABRA

Dr. Adam Sabra is Professor of History and King Abdul Aziz Ibn Saud Chair in Islamic Studies at the University of California, Santa Barbara. His teaching and research focus on the Middle East, particularly Egypt, in the medieval and early modern periods, and the social and cultural history of Cairo. Other areas of interest include legal history and Islamic mysticism. Dr. Sabra has served on

ARCE's Fellowship Committee twice in the past 10 years and has been a fellow three times, once as a dissertation scholar and twice as an NEH funded fellow.



ED SNOW

Ed Snow is a partner with Burr & Forman, LLP, a law firm representing financial institutions, manufacturing concerns and healthcare entities, among other lines of business. He is licensed to practice law in Georgia, Maryland and Tennessee.

He received his J.D. from the University of Tennessee School of Law and his LL.M. in Banking Law from the Boston University School of Law. Mr. Snow is

also a former adjunct professor of contracts and contract drafting at Emory Law and frequently writes and speaks on lending and other legal topics, including legal documents and practices from the ancient Near East. Mr. Snow is co-chair of the board for the Michael C. Carlos Museum at Emory University. He has been an ARCE member since 2003.



JOSEF WEGNER

Josef Wegner is an associate professor of Egyptian archaeology in the department of Near Eastern languages and civilizations at the University of Pennsylvania and associate curator in the Egyptian section of the University of Pennsylvania Museum of Archaeology and Anthropology. He received his Ph.D. in 1996 from the University of Pennsylvania. He has directed excavations at the

mortuary complex and settlement site dedicated to Pharaoh Senwosret III at South Abydos since 1994, as part of the University of Pennsylvania-Yale University-New York University Institute of Fine Arts Expedition to Abydos. His research has been supported by fellowships and grants from ARCE, the National Science Foundation, the National Endowment for the Humanities, the National Geographic Society and the American Philosophical Society. He has been an ARCE member since 1985.

CURRENT BOARD: PRESIDENTIAL APPOINTEES



MELINDA HARTWIG

Melinda Hartwig is the curator of ancient Egyptian, Nubian and Near Eastern art at the Michael C. Carlos Museum at Emory University. Previously, she taught at Georgia State University as a professor of ancient Egyptian and Near Eastern art and archaeology. Besides curating a number of exhibitions, she has authored four books and a wide array of articles. Melinda has worked in Egypt since 1983,

directing Theban tomb documentation and conservation projects, as a recipient of NEH and USAID grants, among others. She received her Ph.D. in Near Eastern art and archaeology from the Institute of Fine Arts at New York University.

SALIMA IKRAM

See under Current Slate above



JANICE KAMRIN

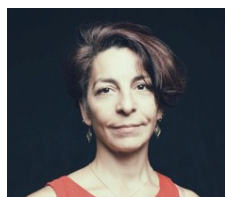
Janice Kamrin is an associate curator at The Metropolitan Museum of Art, where she has been since 2010. One of her primary responsibilities is to oversee the Egyptian Art department's work in the museum's database; she is also part of a project to digitize, process, and prepare for eventual on-line publication of the work of the Met's early 20th century Egyptian Expedition to Thebes. She is currently part of the Joint Expedition to Malqata, the Festival Palace of Amenhotep III on the West Bank of Luxor. Prior to her work at The Met, she served as project director for a cluster of ARCE-sponsored projects at the Egyptian Museum, Cairo. These included the Egyptian Museum Registrar Training and Database projects, which oversaw the creation of a new database for the Egyptian Museum and the intensive training of young Egyptians to serve as registrars and documentation specialists.



ADINA SAVIN

Adina Savin is the Executive Vice President, Business Affairs, Disney Branded Television with oversight of the Business Affairs and Contract Administration teams for Disney Channels Worldwide and Disney Television Animation. She is based in Los Angeles, California. She earned her B.A in Political Science from the University of Southern California, her M.A. from the Eagleton Institute of Politics, Rutgers University, and her J.D from New York University Law School. As a top scholar and student leader, she was the recipient of numerous honors, awards, and financial support that made her education possible. To pay forward to others, Ms. Savin endowed a scholarship at USC in 2016, and last year, endowed another scholarship at NYU Law. She previously served 15 years as a member of ARCE's national Board of Governors, is currently a member of the Board of Governors of ARCE's Southern California chapter, and is a Trustee of the Cheetah Conservation Fund. Ancient Egypt has been a passion since she was a young girl, and she fulfilled a life-long dream years ago when she became a volunteer on the excavation of Tomb 21 in the Valley of the Kings, in Luxor, Egypt.

CURRENT BOARD: RESEARCH SUPPORTING MEMBERS



YEKATARINA BARBASH

Dr. Yekaterina Barbash is Curator of Egyptian Art at the Brooklyn Museum. She received a Ph.D. in ancient Egyptian history, Art, and Philology from the Johns Hopkins University, Baltimore, where she was also awarded an M.A. She is the recipient of a B.A. from New York University. Her dissertation on the hieratic mortuary papyrus of Padikakem was published in the Yale Egyptological Studies Series. Dr. Barbash has taught ancient Egyptian art and Egyptian hieroglyphs at a variety of colleges and universities in the Tri-state area. She has been a member of the Johns Hopkins University expedition to the Mut Precinct in Karnak, Egypt, where the Brooklyn Museum also maintains an excavation. She curated *Body Parts: Ancient Egyptian Amulets and Fragments* and *Divine Felines: Cats of Ancient Egypt*, and co-curated *Soulful Creatures: Animal Mummies in Ancient Egypt*. She has been an ARCE member since 1997.



ROBERT K. RITNER

Robert Ritner is the Rowe Professor of Egyptology at the Oriental Institute of the University of Chicago and was, from 1991- 1996, the first Marilyn M. Simpson Assistant Professor of Egyptology at Yale University. He earned his Ph.D. from the University of Chicago. Dr. Ritner is the author of over 100 publications on Egyptian religion, magic, medicine, language and literature, as well as social and political history. He has lectured extensively on each of these topics throughout the United States, Europe and Egypt. In association with The Field Museum of Chicago, Dr. Ritner was the academic advisor for an Egypt installation and for two British Museum exhibits: “Cleopatra of Egypt: From History to Myth and Eternal Egypt.” In addition, he served as consultant and lecturer for the traveling Cairo Museum exhibit “Quest for Immortality: Treasures of Ancient Egypt.” Dr. Ritner has led Oriental Institute tours of Egypt for 30 years. He has been an ARCE member since 1975.

DEBORAH VISCHAK

See under Current Slate above

CURRENT BOARD: CHAPTER REPRESENTATIVE

NICHOLAS PICARDO

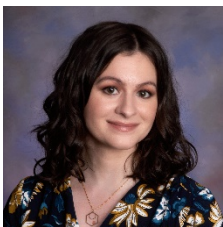
See Current Slate above

CURRENT BOARD: EX-OFFICIO MEMBERS



EXECUTIVE DIRECTOR: LOUISE BERTINI

Louise Bertini has served as ARCE’s Executive Director since April 2019 and previously as Director for Egypt since 2018. She is an Egyptologist and specialist in faunal analysis who has worked on more than 20 archaeological projects in Egypt since 2003. She obtained a M.A. in Egyptology from the University of Liverpool, and a Ph.D. in Archaeology from Durham University. Her research interests include zooarchaeology, bioarchaeology, paleoecology, paleopathology, domestication, subsistence reconstruction, and animal mummification as well as other areas of Egyptology. She was a professor of Egyptology at the American University in Cairo from 2009-2017. She has been a member of ARCE since 2003.



BOARD CLERK: COURTNEY MARX

Courtney Marx is the Administrative and Board Associate for ARCE. Courtney earned her B.A. in Art History from George Mason University in 2017. She earned her M.A. in Art History, with a focus on ancient Egypt, from George Mason University in 2020 and was chosen as the Art History department’s Outstanding Graduate Student honoree. In 2018, Courtney began the Art History Graduate Association at George Mason University, and was elected its first president. She plans to continue her education by earning her Ph.D. in Egyptology in the future.