

Current Slate



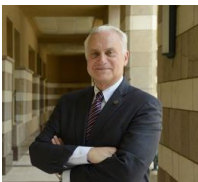
JANICE KAMRIN (2023-2026)

Janice Kamrin (RSM Council Representative) is an associate curator at The Metropolitan Museum of Art, where she has been since 2010. One of her primary responsibilities is to oversee the Egyptian Art department's work in the Museum's database; she is also part of a project to digitize, process, and prepare for eventual on-line publication the work of The Met's early 20th century Egyptian Expedition to Thebes. She is currently part of the Joint Expedition to Malqata, the Festival Palace of Amenhotep III on the West Bank of Luxor. Prior to her work at The Met, she served as project director for a cluster of ARCE-sponsored projects at the Egyptian Museum, Cairo. These included the Egyptian Museum Registrar Training and Database projects, which oversaw the creation of a new database for the Egyptian Museum and the intensive training of young Egyptians to serve as registrars and documentation specialists.



KERRY MUHLESTEIN (2023-2024)

Kerry Muhlestein (RSM Council Representative) is a Professor of Ancient Scripture/Ancient Near Eastern Studies at Brigham Young University, where he has served as the associate chairman of his department. Before that, he was in a joint position in the departments of Religion and History at Brigham Young University – Hawaii. He has also taught for two years at the BYU Jerusalem Center for Near Eastern Studies, and has been a Senior Fellow at the Albright Institute for Archaeological Research, and a Visiting Fellow at the University of Oxford. He has served as Vice President of the Society for the Study of Egyptian Antiquities and as a co-chair for the Egyptian Archaeology Session of the American Schools of Overseas Research. He is the director of the BYU Egypt Excavation Project, where they work on a 4th Dynasty pyramid and a Graeco-Roman cemetery in the Fayoum. He has consulted on archaeological projects in Egypt, Israel, and Jordan. He has lectured and published on Egyptological topics internationally in both academic and lay venues.



FRANCIS RICCIARDONE (2023-2026)

Francis J. Ricciardone (nominated Elected Governor) served as the twelfth President of the American University from 2016 to 2021. Previously he had served as a United States Foreign Service officer, including assignments as Ambassador to Turkey (2011-2014), Egypt (2005-2008), The Philippines and the Republic of Palau (2002-2005), and as Chargé d'affaires and Deputy Ambassador at the U.S. Embassy in Kabul, Afghanistan. Outside U.S. Government Service, he was Vice President of the Atlantic Council and Director of its Rafik Hariri Center for the Middle East (2014-2016); a distinguished visiting scholar at U.S. Institute of Peace (2008-2009); and Chief of the Civilian Observer Unit of the Multinational Force and Observers in the Sinai (1991-1993), an international peacekeeping organization operating in Egypt. Ricciardone has extensive executive experience in public policy in world affairs, interdisciplinary and inter-agency program direction, international educational exchange, organizational change and development, and cross-cultural

public communications. Ricciardone speaks and reads Arabic, Italian, Turkish, and French, as well as rudimentary Farsi.

CURRENT BOARD: OFFICERS



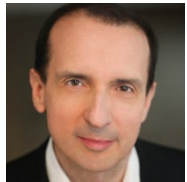
PRESIDENT: DAVID A. ANDERSON (2021-2024)

David A. Anderson is an associate professor of archaeology at the University of Wisconsin-La Crosse. He received his Ph.D. in anthropology from the University of Pittsburgh in 2006. Since 1996 he has been the director of the El-Mahâsna Archaeological Project. His research focuses on the origins of Egyptian civilization, in particular the organization of Predynastic society and the role of ideology in the formation of the ancient Egyptian centralized state and the origins of Egyptian divine kingship. Dr. Anderson specializes in the integration of computers and archaeology, utilizing 3D technologies to facilitate collection, analysis, and dissemination of field results.



VICE PRESIDENT: DENISE DOXEY (2021-2024)

Denise Doxey is curator of Ancient Egyptian, Nubian and Near Eastern art at the Museum of Fine Arts, Boston. Previously, she was keeper of the Egyptian section of the University of Pennsylvania Museum of Archaeology and Anthropology. She completed her M.Phil at Oxford University and her Ph.D. at the University of Pennsylvania. She is the author or co-author of numerous publications on Egyptian and Nubian art, archaeology and civilization. She has excavated in Greece and Egypt and has taught Egyptology courses at the University of Pennsylvania and Harvard University.



TREASURER: PAUL STANWICK (2022-2025)

Paul Stanwick is a scholar of Ptolemaic and Roman Egypt. He was a Finance & Risk management consultant at Accenture PLC. He earned an MBA in finance from Indiana University, and a Ph.D. in Egyptian and Roman art history and archaeology from the Institute of Fine Arts, New York University. Dr. Stanwick has been an ARCE member since 1988.

CURRENT BOARD: ELECTED GOVERNORS



NICOLA ARAVECCHIA (2021-2024)

Nicola Aravecchia is Assistant Professor of Classics and of Art History and Archaeology at Washington University in St. Louis. He holds a BA in Classical Studies from the University of Bologna, an MA in Ancient and Medieval Art & Archaeology and a Ph.D. in Art History both from the University of Minnesota. He is the Archaeological Field Director of the excavations at Amheida/Trimithis, a Graeco-Roman city in the Dakhla Oasis of Upper Egypt; previously, he was the Archaeological Field Director at 'Ain el-Gedida, a fourth-century settlement also in Dakhla Oasis. Nicola is also a Research Affiliate of the Institute for the Study of the Ancient World at New York University.

In the Spring of 2016, he was the invited Chair of Coptic Studies at The American University in Cairo. Nicola's research interests encompass the art and archaeology of Graeco-Roman and late antique Egypt. In particular, they focus on the origins and development of early Christian architecture in Egypt's Western Desert. Nicola is the main author of the final archaeological report on 'Ain el-Gedida, as well as the co-author of a volume on the Amheida excavations. He has also written articles and essays on related subjects, including early Egyptian monasticism.



STEPHANIE DENKOWICZ (2022-2025)

Stephanie Denkowicz is a special counsel at Manatt, Phelps & Phillips, LLP specializing in corporate law and cross border mergers and acquisitions. She earned her B.A. in anthropology and government from the University of Arizona, her J.D. from Rutgers University, and her MA in Egyptology from the University of Manchester. Ms. Denkowicz has served on numerous not-for-profit boards, including those that support orphaned and abandoned children, the arts and cultural affairs. She has been an ARCE member since 2003, is a member of the Nuri Archaeological Expedition, a board member and past President of the ARCE New York chapter, and has previously served on a number of ARCE Board Committees.



HISHAM FAHMY (2022-2025)

Hisham Fahmy is CEO of AmCham Egypt Inc., a mirror organization for AmCham Egypt based in Washington D.C., and advisor to the AmCham Egypt Board of Governors. Prior to January 2016, Fahmy had served as executive director, then CEO of AmCham Egypt since December 1999 and as general manager from 1987 to 1993. Fahmy has helped organize over 30 business missions to Washington D.C. and other states as well as three U.S. missions to Egypt in cooperation with the U.S. Chamber of Commerce. He is a familiar face in Washington, offering expertise on strategic bilateral issues and the economic relationship between Egypt and the United States. For over 20 years, Fahmy has advocated for a friendly business environment for U.S. companies operating in Egypt and Egyptian companies working with the United States. He also helped create the AmCham MENA Regional Council to promote U.S. business and investment in the MENA region, and served as the council's Regional Coordinating CEO. Fahmy also supported the establishment of AmCham Bahrain and AmCham Afghanistan. Under his leadership, AmCham Egypt's membership reached over 1,900 members and 90 staff. Fahmy previously served as acting director of the nonprofit think tank Egyptian Center for Economic Studies. He serves on the Egypt-U.S. Business Council (EUSBC), the Advisory Board of the American University in Cairo's (AUC) School of Business, the Global Board of AMIDEAST, the American Research Center in Egypt (ARCE) President's Advisory Council, the Board of the Education for Employment Association (EFE), and is a member of the American Society for Association Executives. He is also the founder and former chairman of the Egyptian Society of Association Executives. Fahmy has been recognized by U.S. corporations including ExxonMobil, Coca-Cola, PepsiCo and others for his role in promoting Egypt-U.S. economic relations. Most recently, the Center for Transatlantic Relations gave him the "Mediterranean Leadership Award 2016" for

his efforts in fostering stronger U.S.-Egypt business and economic relations. Fahmy graduated from AUC in 1974 with a bachelor's degree in chemistry.



SALIMA IKRAM (2021-2024)

Salima Ikram is Distinguished University Professor of Egyptology at The American University in Cairo, and has worked as an archaeologist in Egypt, Turkey, Sudan, Greece and the United States. After double majoring in history and classical and near eastern archaeology at Bryn Mawr College, United States, she received her MPhil in museology and Egyptian archaeology and Ph.D. in Egyptian archaeology from Cambridge University. She has directed the Animal Mummy Project, the North Kharga Darb Ain Amur Survey, Valley of the Kings KV10/KV63 Mission co-directed the Predynastic Gallery project and the North Kharga Oasis Survey. She has also participated in several other archaeological missions throughout Egypt. She lectures internationally, and publishes in both scholarly and popular journals, as well as having an active media presence.



RITA LUCARELLI (2021-2024)

Rita Lucarelli is an Associate Professor of Egyptology in the Department of Middle Eastern Languages and Cultures at the University of California, Berkeley. She studied at the University of Naples "L'Orientale," Italy, where she received her MA degree in Classical Languages and Egyptology. She holds her Ph.D. from Leiden University, and her dissertation has been published as "The Book of the Dead of Gatseshen: Ancient Egyptian Funerary Religion in the 10th Century BC". Until 2014, she was a Research Scholar on the Book of the Dead Project at the University of Bonn, Germany and lecturer at the same department. Rita Lucarelli is also a Faculty Curator of Egyptology at the Phoebe A. Hearst Museum of Anthropology and Fellow of the Digital Humanities. She is presently working on a project aiming at realizing annotated 3D models of ancient Egyptian coffins (The Book of the Dead in 3D). Rita Lucarelli's other main research interests are magic and funerary religion in ancient Egypt; she is currently completing a monograph on demonology in ancient Egypt.



ADAM SABRA (2020-2023)

Dr. Adam Sabra is Professor of History and King Abdul Aziz Ibn Saud Chair in Islamic Studies at the University of California, Santa Barbara. His teaching and research focus on the Middle East, particularly Egypt, in the medieval and early modern periods, and the social and cultural history of Cairo. Other areas of interest include legal history and Islamic mysticism. Dr. Sabra has served on ARCE's Fellowship Committee twice in the past 10 years and has been a fellow three times, once as a dissertation scholar and twice as an NEH funded fellow.



JULIA TROCHE (2022-2025)

Dr. Julia Troche is currently the director of undergraduate studies and teaches in the Department of History at Missouri State University. She specializes in courses on ancient Egypt, the ancient Near East, archaeology and ancient

history, world history, and sometimes Middle Egyptian hieroglyphs. She co-founded both the American Research Center in Egypt, Missouri Chapter (where she serves as vice president) and the annual Missouri Egyptological Symposium. Her first book, published with Cornell University Press in 2021, is titled "Death, Power and Apotheosis in Ancient Egypt: The Old and Middle Kingdoms" and explores the social, religious and political ramifications of the deification of certain special dead. Her research also explores material culture (e.g. funerary cones and epigraphic graffiti studies), education in ancient Egypt, contemporary pedagogies of teaching ancient history and Egyptomania—the obsession and appropriation of ancient Egypt throughout history. She is committed to advocating for students, early career scholars, and contingent faculty, and fostering inclusive spaces for learning about the ancient world. Dr. Troche received her PhD in Egyptology & Assyriology from Brown University in 2015, and her BA in History from UCLA in 2008.

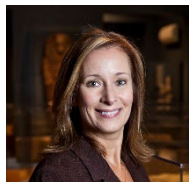
CURRENT BOARD: PRESIDENTIAL APPOINTEES



MAHMOUD ABDALLAH (2022-2024)

Mahmoud Abdallah is the founding Managing Partner of MMA Global Investments LLC, an investment firm. He is also the founder and president of MMA Global Advisors, a consulting firm. Prior to that, Mr. Abdallah held senior executive positions in several global insurance and financial institutions. He serves on a wide variety of public and private boards in the U.S. and abroad.

Mr. Abdallah is a member of the board of the Metropolitan Opera, the New Grand Egyptian Museum and member of the National Council for Arts and Sciences at George Washington University. He is a founder and donor of the MMA Foundation.



MELINDA HARTWIG (2022-2024)

Melinda Hartwig is the curator of ancient Egyptian, Nubian and Near Eastern art at the Michael C. Carlos Museum at Emory University. Previously, she taught at Georgia State University as a professor of ancient Egyptian and Near Eastern art and archaeology. Besides curating a number of exhibitions, she has authored four books and a wide array of articles. Melinda has worked in Egypt since 1983, directing Theban tomb documentation and conservation projects, as a recipient of NEH and USAID grants, among others. She received her Ph.D. in Near Eastern art and archaeology from the Institute of Fine Arts at New York University.



SID KITCHEL (2022-2024)

Sid Kitchel studied history and philosophy of science with a specialty in the history of modern astronomy at Indiana University, Bloomington, but for most of his career he was a computer scientist. In the 1980s he was associate professor of computer science at California State University Sacramento. During the Vietnam War, as a naval officer he worked on the Naval Tactical Data System. He was employee number 2 at the startup Data Parallel Systems, Inc., where he was a database designer helping to build a massively parallel database system. Besides operating with thousands of processors,

this system indexed whole data domains, not just tables as in regular database systems. This feature led Sid to suggest building a dynamic two-phase query optimizer, impossible in any other database system in the world. During his time at DPSI he proved, as principal investigator on a NASA SBIR project, that the powerful, massively parallel DBMS could speed up the operations of an Oracle distributed database. This was of interest to NASA because of the distributed nature of the Earth Observing System. In 1996 he moved to Portland, Oregon, to work on the Informix object-oriented database system. Sid retired in 2016, ending his career with ten years as senior data architect at Business Wire, the Berkshire Hathaway business news company.

FRANCIS RICCIARDONE (2021-2023)

See under **Current Slate** above



ADINA SAVIN (2022-2024)

Adina Savin is the Executive Vice President, Business Affairs, Disney Branded Television, heading up Business Affairs and Contract Administration for Disney+, Disney Channels Worldwide and Disney Television Animation. She earned her B.A. in Political Science from the University of Southern California, her M.A. from the Eagleton Institute of Politics, Rutgers University, and her J.D. from New York University Law School. Ms. Savin has always been passionate about culture and learning, but for the substantial financial support she received as a top scholar and student leader, these educational opportunities would not have been available to her. Now, to help others do the same, Ms. Savin has endowed annual scholarships at USC and at NYU Law. 12 scholars have benefited from her support to date. Ms. Savin's other life-long passion has been Egyptology. She became a life member of ARCE 30 years or more ago, previously served 15 years as a member of ARCE's national Board of Governors, and has been a member of the Board of Governors of ARCE's Southern California chapter since its inception. A long term dream was also fulfilled years ago when she became a volunteer on the excavation of Tomb 21 in the Valley of the Kings, in Luxor, Egypt. In honor of such, she is currently supporting the renovation of Carter House for the King Tut Centennial Celebration. Her trips to Africa also led to a new passion -- the conservation of cheetahs in the wild, and she now serves as a Trustee of the Cheetah Conservation Fund, headquartered in Namibia.

CURRENT BOARD: RESEARCH SUPPORTING MEMBERS



YEKATARINA BARBASH (2022-2025)

Dr. Yekaterina Barbash is Curator of Egyptian Art at the Brooklyn Museum. She received a Ph.D. in ancient Egyptian history, Art, and Philology from the Johns Hopkins University, Baltimore, where she was also awarded an M.A. She is the recipient of a B.A. from New York University. Her dissertation on the hieratic mortuary papyrus of Padikakem was published in the Yale Egyptological Studies Series. Dr. Barbash has taught ancient Egyptian art and Egyptian hieroglyphs at a variety of colleges and universities in the Tri-state area. She has been a member of the Johns Hopkins

University expedition to the Mut Precinct in Karnak, Egypt, where the Brooklyn Museum also maintains an excavation. She curated *Body Parts: Ancient Egyptian Amulets and Fragments* and *Divine Felines: Cats of Ancient Egypt*, and co-curated *Soulful Creatures: Animal Mummies in Ancient Egypt*. She has been an ARCE member since 1997.

JANICE KAMRIN (2022-2023)
See under **Current Slate** above

CURRENT BOARD: CHAPTER REPRESENTATIVE



NICHOLAS PICARDO (2021-2024)

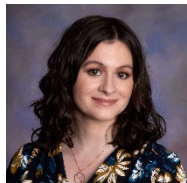
Nicholas Picardo manages the Giza Project at Harvard University. He specializes in household archaeology and digital archaeology. He has served as director of the South Abydos Settlement Excavation E Project and field director with the Kom el-Hisn Provincialism Project. He was a visiting instructor of Egyptology at Brown University in 2010, and a research associate in the Art of the Ancient World department of the Museum of Fine Arts, Boston where he co-curated the exhibition “The Secrets of Tomb 10A: Egypt 2000 BC.” He co-founded the Pennsylvania chapter of ARCE and is currently the president of the New England chapter. He has been an ARCE member since 1998.

CURRENT BOARD: EX-OFFICIO MEMBERS



EXECUTIVE DIRECTOR: LOUISE BERTINI

Louise Bertini has served as ARCE’s Executive Director since April 2019 and previously as Director for Egypt since 2018. She is an Egyptologist and specialist in faunal analysis who has worked on more than 25 archaeological projects in Egypt since 2003. She obtained a M.A. in Egyptology from the University of Liverpool, and a Ph.D. in Archaeology from Durham University. Her research interests include zooarchaeology, bioarchaeology, paleoecology, paleopathology, domestication, subsistence reconstruction, and animal mummification as well as other areas of Egyptology. She was previously a lecturer in Egyptology at the American University in Cairo from 2009-2017.



BOARD CLERK: COURTNEY MARX

Courtney Marx is the Administrative and Board Associate for ARCE. Courtney earned her B.A. in Art History from George Mason University (GMU) in 2017. In 2018, Courtney began the Art History Graduate Association at GMU and was elected its first president. She earned her M.A. in art history, with a focus on ancient Egyptian art and archaeology, from GMU in 2020 and was chosen as the art history department’s Outstanding Graduate Student honoree. Her M.A. thesis on the artistic representations of the daughters of Akhenaten was awarded the student award for Outstanding Graduate Research Project in Art History. She plans to continue her education by earning her Ph.D. in Egyptology in the future.